

ANTONIO LAMPECCO (MAREDRET - BE)

Saison IV – Season IV - Crystallized



Born in Minucciano, Tuscany in 1932, based in Belgium since 1942, Antonio Lampecco, took the direction of the ceramics workshop at the Abbey of Maredsous in 1962. Since 1958 and the World Expo in Brussels, Lampecco has

exhibited his work in Belgium and internationally. He won a Golden Medal in Prague, Faenza and Monza, received the City Prize in Vallauris in 1982 (FR). Since 1992, he has opened its showroom in Maredret.

About the artist

A great sensitivity in the hands and even more in the heart is necessary to make beautiful ceramics, as well as a constant search in the forms. For me, a good craftsman is in life a simple person, reproducing in his works what he feels in himself, craftsmanship must be an integral part of life.

Context of Belgian Design History

45 years after his Golden Medal won at the Design Center Brussels, 1972, the Italian potter and ceramist Antonio Lampecco comes back to the contemporary scene at Spazio Nobile. As a passionate artist, he will never stop creating new typologies of objects, searching always for new cristalline glosses, glazes and firing processes. Looking back at the golden age of Maredsous Abbey, where Lampecco studied ceramics, we are reexploring with him the Maredsous school founded in 1903, which was from 1939 until the mid-1960s one of the excellence center for applied arts in Belgium, especially when speaking about training artists rather than craftsmen in the field of silversmithing and ceramics. Many of the masterpieces coming from Maredsous have been revealed to the public at the Expo 58 in Brussels.

Works List / Liste des œuvres

Saison IV – Season IV - Crystallized

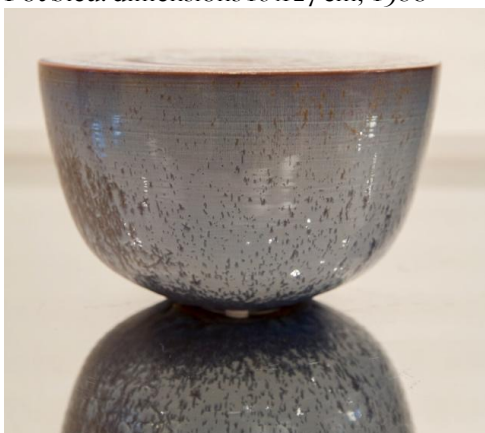


Installation of large scale contemporary soft glazed ceramic sculptures with signature-made crystalline compositions, unique pieces, 1960-2000s

1. Pot bleu / vert : dimensions 18 x 27 cm, 1980..... (Sold)



2. Pot bleu: dimensions 16 x 27 cm, 1980



3. Pot bleu vert: dimensions 20,5 x 23 cm, 1980



4. Pot bleu clair: dimensions: 25 x 36 cm, 1980



5. Pot bleu mauve : dimensions 12,5 x 29 cm, 1980



6. Pot bleu vert: dimensions 13 x 28 cm, 1980



7. Grand pot: dimensions 38 x 42,5 cm, 2000



8. Pot plat bleu: dimensions 14 x 20, 2010.....725€
(Sold)



9. Pot bleu: dimensions 28 x 28 cm, 2010



10. Pot bleu: dimensions 20 x 24 cm, 2010



11. Pot petit bleu: dimensions 17; 22 / 1990 (Sold)



12. Pot plat bleu: dimensions 12 x 26 cm, 1990 (Sold)



13. Pot bleu: dimensions 22 x 22 cm, 2010 (Sold)



14. Pot bleu: dimensions 22 x 19 cm, 1990 (sold)



15. Pot mauve: dimensions 22 x 24 cm 2010



16. Pot plat bleu: dimensions 13 x 25 cm, 2010



17. Pot petit: dimensions 16 x 18 cm, 1990



18. Pot petit: dimensions 22 x 17 cm, 1980



19. Pot haut bleu: dimensions 45 x 20 cm, 1963



20. Haut pot saumon : dimensions 35 x 29 cm, 1980



21. Pot bleu: dimensions 35 x 33 cm, 2005



22. Pot jaune: dimensions 34 x 35 cm, 2007 (Sold)



23. Pot mauve: dimensions 26 x 24 cm, 1980



24. Pot bleu-mauve: dimensions 26 x 25 cm, 1980



25. Pot plat grand mauve: dimensions 14 x 30 cm, 1980



26. Pot mauve bleu clair : dimensions 30 x 30 cm, 1980



27. Pot plat grand bleu : dimensions 12 x 31,5 cm, 1980



28. Pot bleu: dimensions 23 x 32 cm, 1980



29. Pot bleu mauve: dimensions 26 x 27 cm, 2010



30. Pot grand bleu mauve: dimensions 38 x 42 cm, 2003



31. Pot grand brun: dimensions 36x37,5 cm, 1980



32. Pot grand haut bleu brun: dimensions 56 x 35 cm, 1997 (sold)



33. Pot grand haut mauve clair: dimensions 58 x 38 cm, 2003



34. Pot grand bleu: dimensions: 60 x 38 cm, 1990



35. Pot grand avec col bleu: dimensions 73 x 38 cm, 1980



36. Pot bleu vert: dimensions 40 x 43 cm, 1980

